



KOMET®
GROUP

4 **KOMET-COMTOC®**
4 your eyes only



Electronic Tool Catalogue
Edition 01/06

 WinTool
2006



Index	Page
Information KOMET-COMTOC®	2
KOMET Licence Contract	2
Installation note	3 - 4
Working with WinTool: Components	4 - 6
Complete tools	6 - 7
Cutting data program	7

KOMET-COMTOC®

This CD ROM contains the electronic tool catalogue "WinTool". WinTool 2004 is a 32-bit application for Windows. The software has been developed and marketed by the Datos Computer company (www.datos.ch).

To manage our products in other operating management systems (e.g. TDM-Walter), drawing records can be read directly from the CD ROM.

We reserve the right to make modifications, technical updates and further developments.

KOMET - Licensing agreement

This is a legal contract between you, the final user, and the KOMET GROUP GmbH organisation:

KOMET Precision Tools GmbH & Co. KG · JEL Precision Tools GmbH & Co. KG · Dihart AG Precision Tools

By using this CD ROM you declare that you agree with the specifications of this contract.

- 1. Granting of a licence** The KOMET GROUP organisation grant you the right to use the KOMET-COMTOC® software program covered by this.
- 2. Ownership** The software is the property of the KOMET GROUP organisation or their suppliers and is protected by copyright law.
- 3. Other restrictions** You may not hire, lend or pass this software to third parties in any way.
- 4. Warranty** The KOMET GROUP organisation will not be liable for faults in the software, which has been issued free of charge, and in the written material and accompanying hardware. Neither the KOMET GROUP organisation nor its suppliers are liable for reimbursement for any damage - and in particular for compensation for loss of profits, interruption of operations, loss of business information and data or for any other financial loss - which has occurred as a result of using this software or its unsuitability for the operation. This does not affect claims which involve inalienable legal rights relating to product liability.
- 5. Jurisdiction** German law will apply for KOMET and JEL products and Swiss law for Dihart products under this contract. The German version of the contract is the original text. Jurisdiction for general legal disputes resulting from this contract is at the company offices: at Stuttgart/Germany for KOMET and JEL products and at Dulliken/Switzerland for Dihart products. Should one of the companies act as complainant, however, they will be entitled to apply to the court for the respondent's offices. We are at your disposal at any time for any queries or for further information.

Customer Registration Card

We will endeavour to keep you informed individually and comprehensively. Completing and returning the customer registration card will ensure that you are kept constantly informed of future updates on the latest KOMET-COMTOC® software versions.

Your address: (please use block capitals)

Company

First name - surname

Department

Address

Recommended prerequisites for system

- Pentium computer 133 Mhz
- 32 MB RAM
- VGA graphics card 640x480 pixels
- CD ROM drive
- Windows 98/ME or NT 4.0 / 2000 / XP
- at least 300 MB free hard disk space

For first installation

WinTool 2004 is installed by the installation program on the CD. If the installation program does not start automatically when you insert the CD in the drive, start it by running Install.exe on the CD.

When WinTool 2004 is installed, the files belonging to the application are copied to the C:\Program\DATOS\WinTool2006 directory unless you have specified a different directory during the installation process.



If you have not installed Access 2000 on your PC, you will first need to manually install System Update/Access Runtime from the CD.

If you have installed a newer version of Access, you need to remove this before you install Access 2000. You can then re-install the new version.

Further information can be found in the pdf which you will find on the CD in "Help_Access".

The procedure for this is as follows: open Windows Explorer and manually activate the file SETUP.EXE from the AccessRT_DE directory with a double click. Next follow the installation routine for Access Runtime. You can then start the installation for WinTool 2006.

Please restart your computer once you have installed the software (if you have not already been asked to do so by the system).

Updating from WinTool 2000 - 2004

1. Create a safety copy of WTData.mdb (this has been installed as standard in the directory C:\WinTool200*).

2. Proceed as described for new installation.

Please ensure that you do not install Wintool 2006 in the same directory as Wintool 200*. The standard practice is to install the software in a new directory C:\Program\DATOS\WinTool2006.

3. Start Wintool 2006.

To be able to use your old data again (such as complete assembled tools from Wintool 200*) in the new version, you must first set up the path to your old databank in Wintool 2006. Do this under "Maintenance - new path" [Wartung-neuer Pfad]. Select the old WTData.mdb from the old WinTool200* directory and confirm the popup message (Update databank) with "Yes". This procedure will take a little time. Check in the maintenance window whether the path for your current databank is now as follows:

C:\WinTool200*\WTdata\mdb.

4. Copy in the new KOMET catalogue (see page 4)

The Update is now complete - your old data/settings have been transferred and the new catalogue/tool data has been successfully copied in.

You can now start working with WinTool 2006.

WinTool 200*

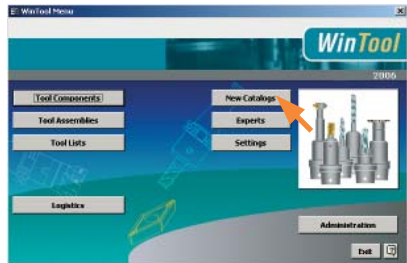
means WinTool 2000 / 2001 / 2002 / 2003 / 2004

Copying in catalogs

If the WinTool 2006 software is already installed on the computer, you may add the catalogue data with the function New catalogs / import catalog.

Drive letter for CD-Rom e.g.:

D: - then select Cat\Comtoc_2006_GB.CAT for the english catalog version.



Working with WinTool - Tool Components

WinTool Menu

After Start, the WinTool Menu will appear. Select the individual areas which are to be opened in their own window.

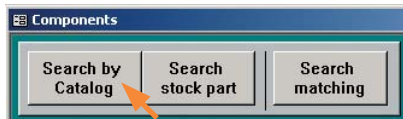


To search for components, activate **Tool Components**.



Then start **Search by Catalog**.

Unlike a hardcopy catalog, you now have 2 ways of searching for components.



1. Under Order No.

Search under order no.: this function allows you to search directly for a component under order numbers.

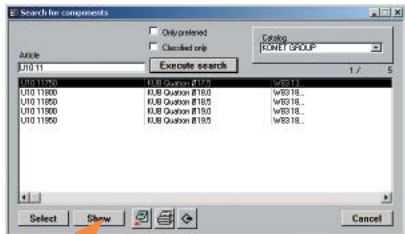
The complete order number does not need to be entered.

Note: For order numbers which start with a letter, a space should be entered after the third digit e.g. (U10 11...).

For catalogue select required manufacturer.



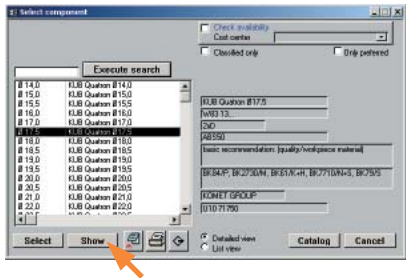
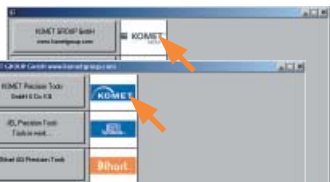
By entering an order number which is not complete, all order numbers which start in the same way will then be displayed in a list. Now select the relevant component and confirm with **Show**.



2. Browse Catalogue

Using this function you can find a group/range in the catalogue for the tool type you require.

Now select the matching component and confirm with **Show**.

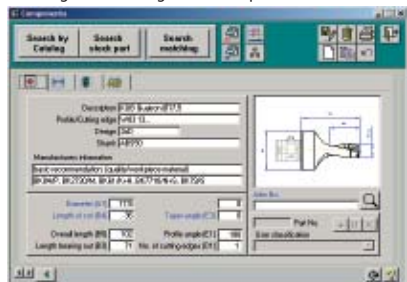


Working with WinTool - Tool Components

You can search for a matching component for a component which has been selected - e.g. right-hand (insert) or left-hand (adaptor).

Note: please make sure the correct catalogue has been selected.

Selecting the data ranges for a component.



Exporting graphics

Click on the drawing until this has been activated by a frame; then select **Process / Copy** from the menu bar at the top. The image is then held in a temporary store and can be inserted in another program (e.g. MS Office).

Exporting a drawing in DXF format



Using the Export key, drawings are exported in DXF-format.



Help



Add activated tool to notes



Print with Print Preview and various print formats



Activate a component out of the notes

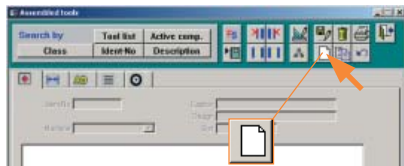


Return to WinTool menu

Working with WinTool - Assembled tools

Combine your **assembled tool**, find **new data block** and then confirm with **Yes**.

With Machine Allocation you can select one of the machines allocated - if this is not relevant, select **Without Allocation** and confirm with **Select**.



Find the first components with **Search by Catalog**, **activated** or **from Notes** and confirm with **Select**.

Subsequent components are simply added from the left or right. This is particularly easy using the "Add components to the right or left" function.



Using this function **remove** selected components at the right or left end.

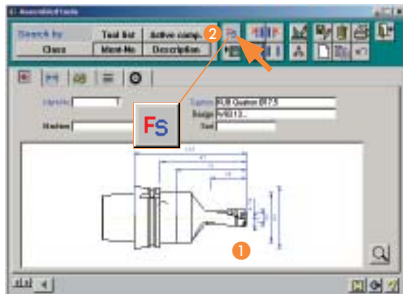


Working with WinTool - Cutting data program

Your combined complete tool with parts list, graphics, etc. is now ready.

Create the appropriate cutting data for your tool!

- 1 Produce or open a complete tool
- 2 Activate the Technology key



Activate/deactivate add-on conditions:
for manual selection of components
(important note: any components can be
added even if this is not possible in
practice).



Export the data record displayed:
export drawings in the DXF format.

Help

- 3 Find a new data block
- 4 Select the material to be processed and insert this with \ll
- 5 Now complete the fields relevant to the cutting value (for drills the diameter and number of cutting edges are automatically included)
- 6 Save your entries and print out



Cutting data values:

- a_p*** Infeed axial in mm
- a_e*** Infeed radial in mm
- D*** Diameter in mm
- z*** Number of teeth/ cutting edges
- v_c*** Cutting speed in metres per minute
- f_z*** Infeed per tooth per revolution in mm
- S*** Spindle speed (calculated from *D* and *V_c*)
- F*** Forward feed of the tool in mm per minute (calculated from *f_z*, *z* and *S*; with thread-cutting tools, allowance is made for the pitch *p*)
- P*** Required power
- T*** Tool life attained
- L*** Length machined
- t_c*** Machining time



KOMET GROUP GmbH
Zeppelinstraße 3
D-74354 Besigheim
Tel. +49(0)7143.373-0
Fax +49(0)7143.373-233
info@kometgroup.com

KOMET Precision Tools GmbH & Co. KG
Zeppelinstraße 3
D-74354 Besigheim
Tel. +49(0)7143.373-0
Fax +49(0)7143.373-233

JEL Precision Tools GmbH + Co. KG
Ruppmannstraße 32
D-70565 Stuttgart / Vaihingen
Tel. +49(0)711.78891-0
Fax +49(0)711.78891-11

Dihart AG Precision Tools
Industriestrasse 2
CH-4647 Dulliken
Tel. ++41-62-2 85 42 00
Fax ++41-62-2 85 42 99

© 2006 KOMET Precision Tools GmbH & Co. KG
© 2006 JEL Precision Tools GmbH & Co. KG
© 2006 Dihart AG Precision Tools

399 01 335 20-01/06

www.kometgroup.com